

### Natural Refrigerants Ultra-Low Temperature Freezer

-86°C to -40°C



525 L / 725 L



MDF-DU500ZHA

MDF-DU700ZHA

#### New door structure to reduce frost on the inner door

PHC's New MDF-DU500ZHA/MDF-DU700ZHA reduce "frost" on the surface of the inner door. "Frost" that adheres to the inner door surface is suppressed. This reduces the time required for troublesome defrosting work. MDF-DU500ZHA/MDF-DU700ZHA are ultra-low temperature freezers that also achieve high energy efficiency by using a natural refrigerant (non-Freon) and inverter control.

#### Natural refrigerants and inverter technology

Naturally occurring hydrocarbon (HC) refrigerants have minimal effect on the environment and are compliant with environmental legislation for climate control. Combined with inverter technology, these refrigerants also provide more efficient cooling without compromising cooling performance, ambient tolerance, and recovery speeds following door openings.

#### Inner door with vacuum insulation

The structure has been changed to an inner door with vacuum insulation material. By insulating the inside and outside of the cabinet with the inner door alone, frost on the surface of the inner door is reduced.

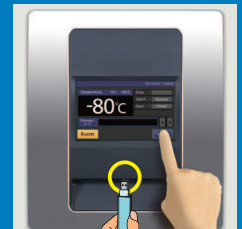


MDF-DU700ZHA

Conventional model

#### Multi-function LCD control panel

The 7-inch full-color LCD touch panel is accurately controlled even with a gloved hand, while the USB port makes transferring logged data of product's operational status to a PC convenient.



#### Energy efficient performance

Natural refrigerants, compressors and integrated electronics combine to lower operating costs compared to existing models by up to 53%\* (expected percentage). Freezer operation is managed by effectively balancing temperature performance and energy management.



\* Compared to conventional model

#### Reduced defrosting process on inner door surfaces

Are you stressed about defrosting the surface of the inner door of your ultra-low temperature freezer? PHC's models MDF-DU500ZHA/MDF-DU700ZHA reduce the time-consuming "defrosting" process.



One-time defrosting and wiping time  
Total time  
Conventional model

Approx. 16 min.

MDF-DU500ZHA  
MDF-DU700ZHA

Approx. 7 min.

NB: How much frost will build up in the freezer depends on the environment where it's used.

#### Data log function

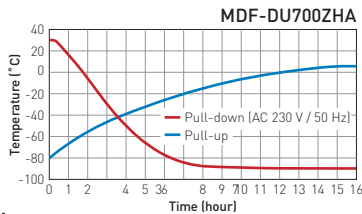
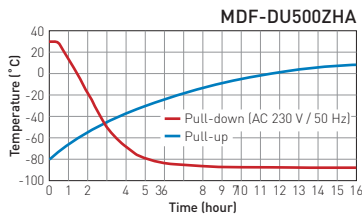
LCD touch panel for various operations. Graphical display of temperature history, door opening/closing history, etc. can be checked.



# Natural Refrigerants Ultra-Low Temperature Freezer

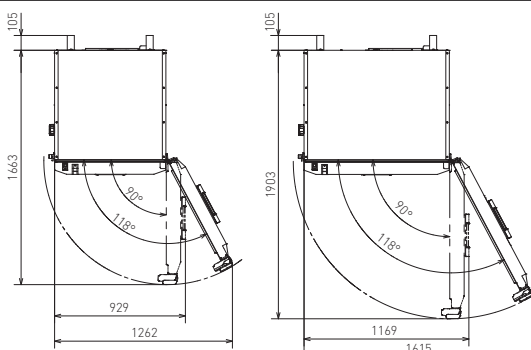
## Performance Data

### AT30°C Pull-down & Pull-up Temperature



## Dimensions

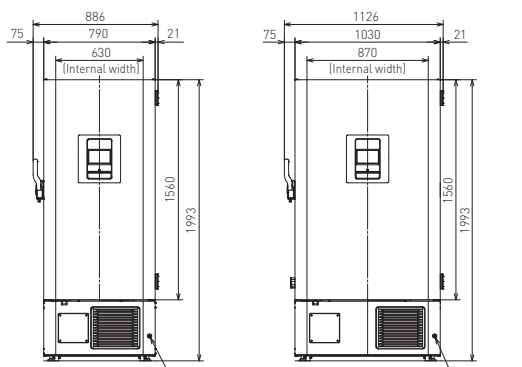
Unit : mm



MDF-DU500ZHA

MDF-DU700ZHA

### Top view



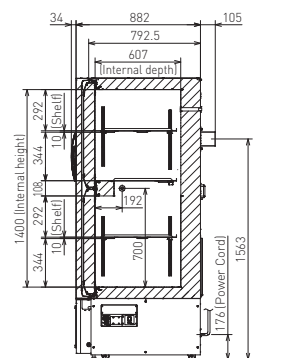
MDF-DU500ZHA

Power Cord (Back)

MDF-DU700ZHA

Power Cord (Back)

### Front view



MDF-DU500ZHA/MDF-DU700ZHA

### Side view

Model Number		MDF-DU500ZHA-PA	MDF-DU700ZHA-PA
External dimensions (W x D x H) <sup>1)</sup>	mm	790 x 882 x 1993	1030 x 882 x 1993
Internal dimensions (W x D x H)	mm	630 x 607 x 1400	870 x 607 x 1400
Volume	liters	525	725
Net weight	kg	248	282
Capacity <sup>2)</sup>	2" boxes	352	528
<b>Performance</b>			
Cooling performance <sup>3)</sup>	°C		-86
Temperature setting range	°C		-90 to -40
Temperature control range <sup>3)</sup>	°C		-86 to -40
<b>Control</b>			
Controller		Microprocessor with non-volatile memory	
Display		LCD Touchpanel	
Temperature sensor		Platinum resistance [Pt 1,000 Ω]	
<b>Refrigeration</b>			
Refrigerant		HC	
Insulation		Rigid polyurethane foamed-in place + Vacuum insulation panel	
<b>Construction</b>			
Exterior material		Painted Steel	
Interior material		Painted Steel	
Outer door	qty	1	
Outer door lock		Y	
Inner doors	qty	2	
Shelves	qty	3 [2 shelves adjustable, 1 dedicated central shelf]	
Max. load - per shelf	kg	50	
Vacuum release port		1 [manual]	
Access port	qty	3	
Access port position		back x1, bottom x2	
Access port diameter	∅ mm	17	
Casters	qty	4 [2 leveling feet]	
<b>Alarms (V = Visual Alarm, B = Buzzer Alarm, M = Message, R = Remote Alarm)</b>			
Power failure		B-M-R	
High temperature		V-B-M-R	
Low temperature		V-B-M-R	
Filter		V	
Door open		V-B-M	
<b>Electrical and Noise Level</b>			
Power supply	V	115	
Frequency	Hz	60	
Noise level <sup>4)</sup>	dB (A)	52	
<b>Options</b>			
Back-up cooling kit		MDF-UB7-PW <sup>5)</sup>	
Inventory rack		IR-220U-PW, MDF-24SR1-PW	
Temperature recorders	- Circular type	MTR-G85A-PA <sup>6)</sup>	- Chart paper: RP-G85-PW - Ink pen: PG-R-PW
	- Continuous strip type	MTR-85H-PW <sup>6)</sup>	- Chart paper: RP-85-PW - Ink pen: DF-38FP-PW - Recorder housing: MDF-S3085-PW
	Recorder sensor cover		MTR-DU700SF-PW
<b>Optional Communication Systems</b>			
Digital interface [RS232C/RS485]		MTR-480-PW <sup>7)</sup>	
Ethernet interface [LAN]		MTR-L03-PW <sup>7)</sup>	

1) Exterior dimensions of main cabinet only, excluding handle and other external projections.

2) Usable storage capacity of 2" boxes when the original 3 trays installed.

3) Air temperature measured at freezer center, ambient temperature 30°C, no load.

4) Nominal value - Background noise 20 dB(A).

5) Settable range of the injection start temperature is -70°C to -50°C.

6) Requires sensor cover MTR-DU700SF-PW.

7) Standard signal and interface cables with a maximum length of 30 meters are recommended.

• Appearance and specifications are subject to change without notice.

**Caution:** PHC Corporation guarantees this product under certain warranty conditions. However, please note that PHC Corporation shall not be responsible for any loss or damage to the contents of the product.

DISTRIBUTED BY:

帝博企業有限公司

(06)2695868、2695878 台南市東區自由路二段41號

dybo24290916@gmail.com <http://www.dybo-medical.com/>

**PHCbi**

PHC Corporation