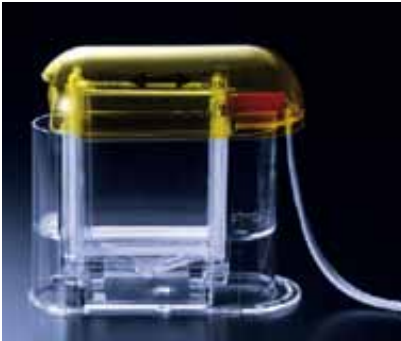


FastGene® Protein Electrophoresis System

Compact, economical, very convenient to use



The FastGene® Protein Electrophoresis chamber was developed specifically for the use of precast PAA (10 x 8 cm) gels for protein electrophoresis. It is made of highly pure, crystal-clear plastic, which facilitates the application of the sample and allows good visual control during electrophoresis. It can be run simultaneously with two gels. The assembly of the gels into the chamber is facilitated by using an innovative „wedge system“ that prevents leakage of the buffer reservoir. During electrophoresis, the gel cassettes from both sides are surrounded with running buffer to allow for efficient cooling and thus sharp protein bands. The chamber is manufactured according to CE directives.

Specification

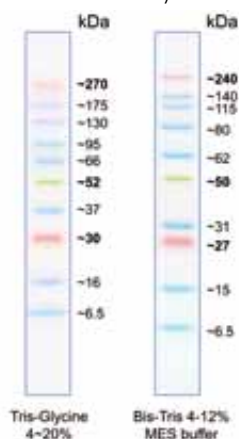
<i>Dimensions</i>	8 cm (L) x 18 cm (W) x 18 cm (H)
<i>Weight (without gels)</i>	0.5 kg
<i>Plastics</i>	Acryl
<i>Gaskets</i>	Silicon
<i>Capacity of the buffer chamber</i>	500 ml
<i>Voltage</i>	0-600 Vdc
<i>Current</i>	0-100 mA
<i>Temperature range</i>	0-50°C
<i>Compatibility to pre cast gels</i>	10 x 8 cm gels

Ordering Information

<i>Cat.Nr.:</i>	<i>Product</i>
FG02	FastGene® Electrophoresis Unit

FastGene® BlueEasy Protein Marker

BlueEasy



The BlueEasy Prestained Protein Ladder is a three color protein standard with 10 prestained proteins. It has the largest range of molecular weights from 6.5 to 270 kDa.

The BlueEasy Prestained Protein Ladder is designed for monitoring protein separation during SDS-polyacrylamide gel electrophoresis, verification of Western transfer efficiency on membranes (PVDF, nylon, or nitrocellulose) and for approximating the size of proteins.



FastGene® Pre-stained Protein Marker

One, two or three different colours

BlueStar Prestained Protein Ladder

The BlueStar Prestained Protein Ladder is a three color protein standard with 10 prestained proteins covering a wide range molecular weights from 10 to 180 kDa.

The BlueStar **PLUS** Prestained Protein Ladder is a three color protein standard with 12 prestained proteins covering a wide range molecular weights from 10 to 240 kDa.

The Prestained Protein Ladder is designed for monitoring protein separation during SDS-polyacrylamide gel electrophoresis, verification of Western transfer efficiency on membranes (PVDF, nylon, or nitrocellulose) and for approximate sizing of proteins.

PiNK Prestained Protein Ladder

The PiNK Prestained Protein Ladder contains 11 proteins that resolve into sharp, tight bands in the range of 5-175 kDa. The PiNK Prestained Protein Ladder allows you to monitor molecular weight separation during electrophoresis, estimate molecular weights of proteins of interest, and evaluate western transfer efficiency.

JustBlue Prestained Protein Ladder

The JustBlue Protein Marker is a reasonable priced alternative to the BlueStar Marker. Eleven proteins are coupled with a blue chromophor. 3-5 µl per loading for clear visualization during electrophoresis on 10-15 well gels. We recommend 2-3 µl per well for Western Transfer.

Two reference bands (25 and 72 kDa) are enhanced in intensity when separated on SDS-PAGE. Stable for up to 3 months at 4°C, long term storage at -20°C.



Ordering Information

Cat.No.:	Product	Content
MWPO6	BlueEasy Prestained Protein Marker (500 µl)	Sufficient for 100 mini gels or 50 large gels
MWPO3	BlueStar Prestained Protein Marker (500 µl)	Sufficient for 100 mini gels or 50 large gels
MWPO4	BlueStar PLUS Prestained Protein Marker (500 µl)	Sufficient for 100 mini gels or 50 large gels
MWPO2	Pink Prestained Protein Marker (500 µl)	Sufficient for 100 mini gels or 50 large gels
MWPO5	JustBlue Prestained Protein Marker (500 µl)	Sufficient for 100 mini gels or 50 large gels